

Map Your Values in IFTDSS Available Now!

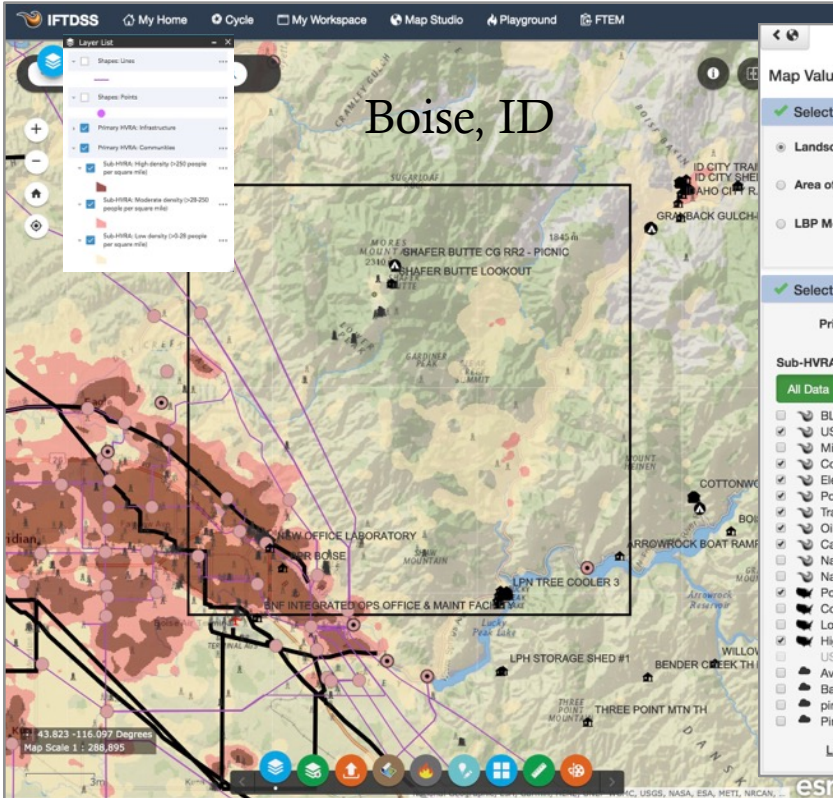
Fact Sheet

<http://iftdss.firenet.gov>



- Map Values to create a Highly Valued Resource or Asset (HVRA) Set for use with any IFTDSS Model Output or Landscape
- Select from different data sets: National HVRA, IFTDSS reference data or upload your own!
- Zoom to your saved data set for quick viewing in Map Studio

[Click Here to Watch the Video](#)



Map Values Clear Form

✓ Select Geographic Extent (Pick one) ↕

Landscape Boise Foothills ✓
 Area of Interest (AOI)
 LBP Model Output

✓ Select Primary HVRA Category and Sub-HVRAs (maximum of 10 each) ➤

Primary HVRA Category* Infrastructure Create New

Sub-HVRA Pending HVRA Set ➤

All Data

Primary HVRA: Communities	
Sub-HVRA Name	Short Name (for reports)
High density (>250 people per square mile)	High
Moderate density (>28-250 people per square mile)	Moderate
Low density (>0-28 people per square mile)	Low

Primary HVRA: Infrastructure	
Sub-HVRA Name	Short Name (for reports)
High Investment Buildings and Developed Recreation Sites	High Inv
Oil/Gas Pipelines	Pipeline
Transmission Lines	Trans Line
Communication Towers	Comm Tower
Electric Sub Stations	Sub Sta
Powerlines	Pwrline
USFS Buildings	Bldgs USFS
Power Plants	Power Plant
Campgrounds (BLM and USFS)	Fed Campgrnd

Name HVRA Set* ➤

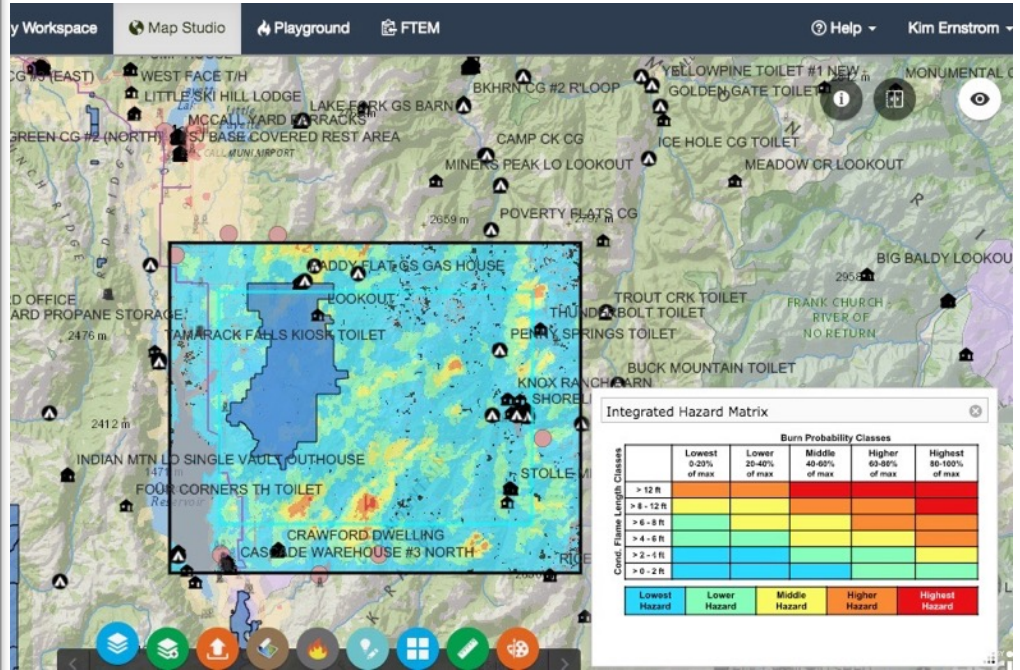
Set Name:

Coming Soon! Map Values in Exposure Analysis and Quantitative Wildfire Risk Assessment

Use the Mapped Values functionality now in a variety of fuels planning projects, NEPA work, and analyses. This will be a key component in the Exposure Analysis that is currently under development.

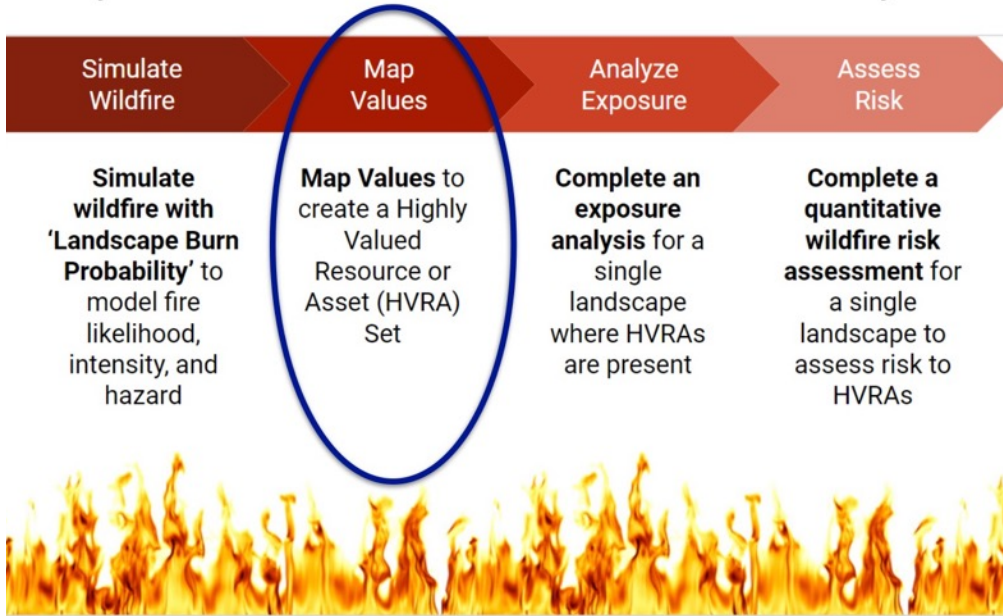
- Prescribed Fire Planning - complexity analysis, contingency planning
- NEPA Specialist Reports
- Treatment Prioritization

View your saved HVRA Set with your fire behavior outputs to assess hazard and determine priorities and problem areas



July 2019

Early 2020



Exposure Analysis and Risk Assessment

Coming Soon.

[Click for More Info](#)

Exposure Analysis is expected this winter, with Risk Assessment to follow!



For More Information

For more information about IFTDSS Development contact the IFTDSS Team.

Project Manager: Henry Bastian
Business Leads: Tim Sexton USFS, Kim Van Hemelryck DOI
IFTDSS Technical Leads: Caroline Noble, Kim Ernstrom, Bre Schueller, Nicole Vaillant