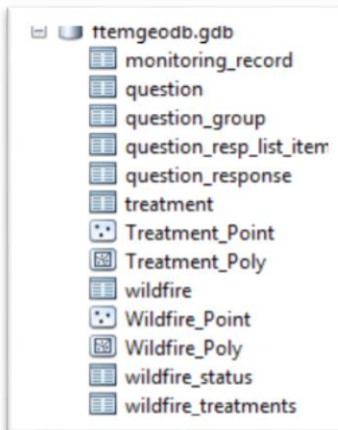
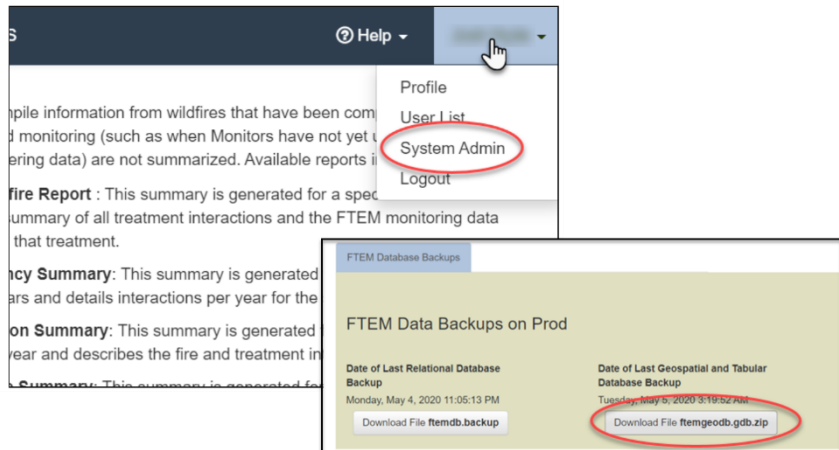


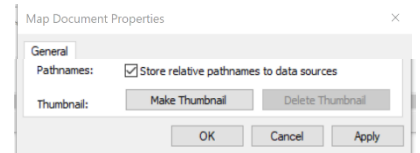
README.ftemgeodb.gdb

Here we provide basic instructions for joining attribute tables to the associated feature classes exported from the Fuels Treatment Effectiveness Monitoring (FTEM) application as a geodatabase. This geodatabase file is available to those with an FTEM Administrator role via their FTEM Profile>System Admin>FTEM Database Backup>Download File ftemgeodb.gdb.zip.



The **ftemgeodb.gdb** is an export of the key feature ftem feature classes and associated tables. Tables contain the important attributes plus a join field common to the stand-alone attribute table and the table of the associated feature class.

FTEM_v10.4_rel.mxd is an ArcMap mxd (v 10.4) which includes layer files of the feature classes, pre-joined to some of the main tables in this file geodatabase. The layer files in FTEM_relative.mxd store data sources with relative addresses. This means that layer file links to the data sources in ftemgeogd.gdb will remain intact and unbroken as long as the mxd is in the same sub-directory as the ftemgeodb.gdb, regardless of where they co-reside on a user's local computer.



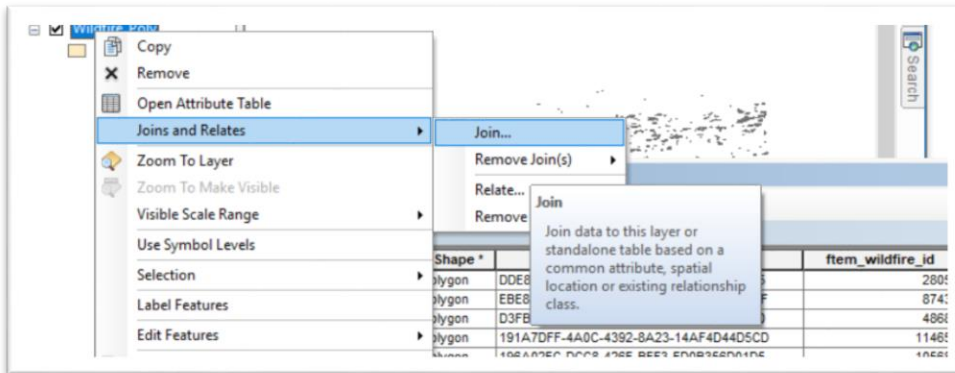
The feature classes in **ftemgeodb.gdb** contain a few key fields and attributes are joined from stand-alone attribute tables to the associated feature class tables through joins on common fields.

Feature Class	Join Field in Feature Class	Attribute Table	Join Field in Attribute Table
Wildfire_Poly	fitem_wildfire_id	wildfire	fitem_wildfire_id
Wildfire_Point	fitem_wildfire_id	wildfire	fitem_wildfire_id
Treatment_Poly	fitem_treatment_id	treatment	fitem_treatment_id
Treatment_point	fitem_treatment_id	treatment	fitem_treatment_id

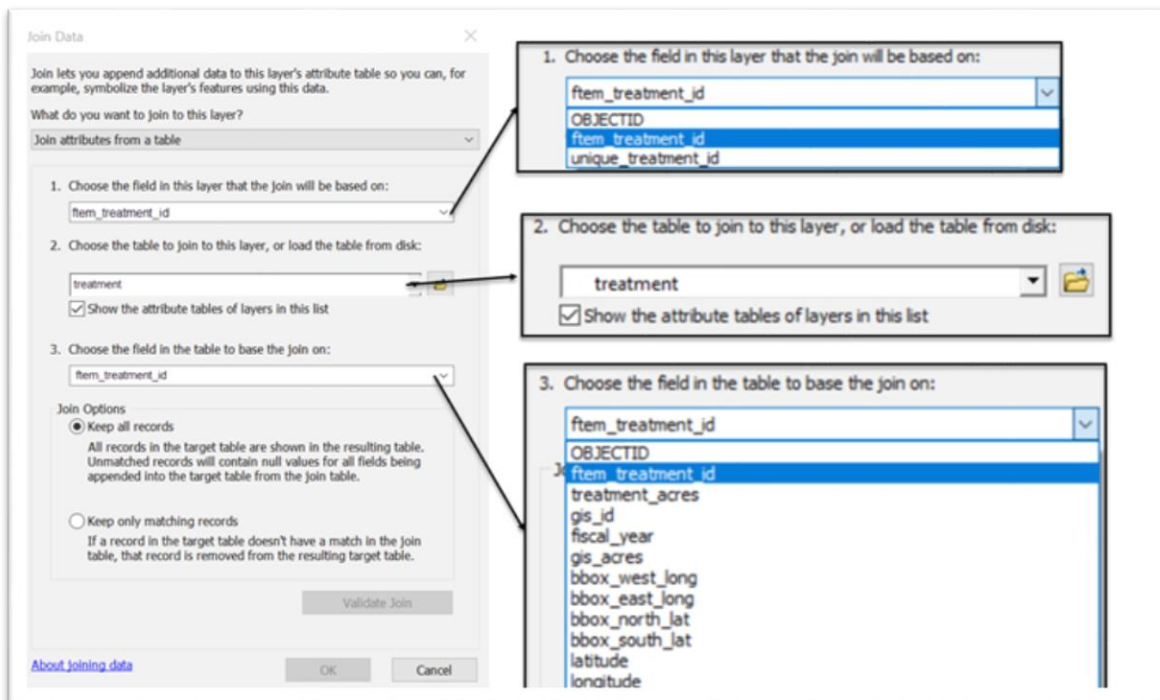
Joining

Once you've downloaded the geodatabase, you may join stand-alone attribute tables to feature class tables in an ArcMap mxd. The steps below describe this in ArcMap version 10.4:

- Unzip the geodatabase file.
- In your ArcMap .mxd, add a feature class.
- Right click the feature class and select **Joins and Relates**, then click on **Join**.



- In the **Join window** that opens, choose the (1) layer field, (2) desired table from fitemgeodb.gdb, and (3) table field to join records to, then click **OK**.



Additional information can be found in the links below:

Add Join Geoprocessing tool in ArcGIS Pro: <https://pro.arcgis.com/en/pro-app/tool-reference/data-management/add-join.htm>

ArcGIS Desktop ArcMap 10.8 Join Tables information:

<https://desktop.arcgis.com/en/arcmap/latest/manage-data/tables/essentials-of-joining-tables.htm>