

New in IFTDSS Version 3.1.1

Fact Sheet



<http://iftdss.firenet.gov>

- Generate Fire Behavior and Landscape Reports from a Specific Area of Interest
- Fuel Moisture Conditioning Options Added to Landscape Fire Behavior
- Advanced Wind Options Now Available in Landscape Fire Behavior
- One Click to Copy Your Fire Behavior Model Run
- Quickly View Model Run Inputs in the Enhanced Modeling Playground
- Alaska 2014 Landfire Data Now Available
- Improved and Redesigned Help Center

We Need Your Feedback!

In order to build the best IFTDSS possible we need to hear from YOU! So far users have contributed significantly to improvements and enhancements. Let your Voice be Heard!

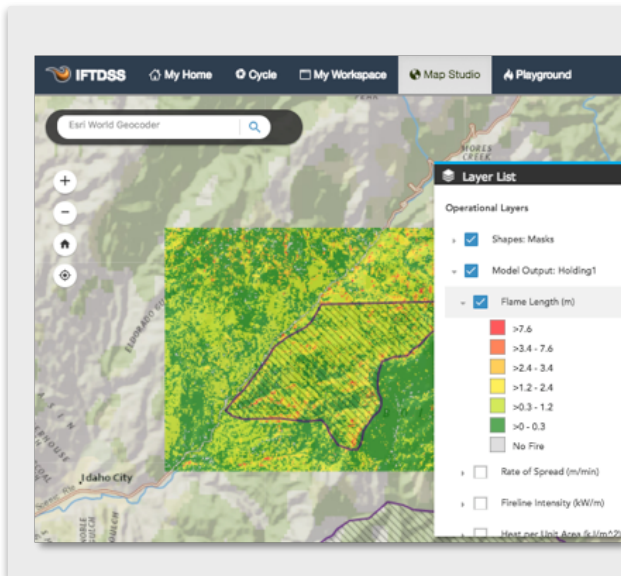
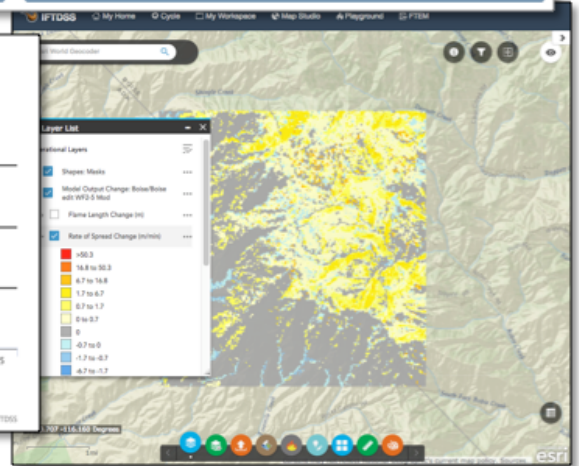
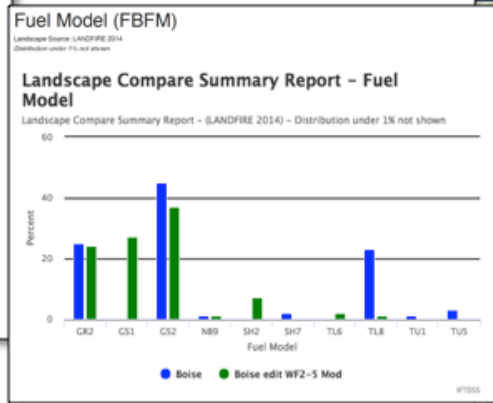
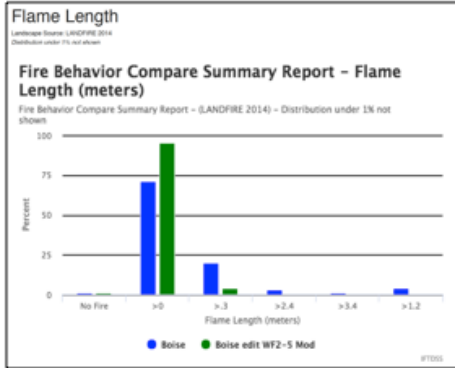
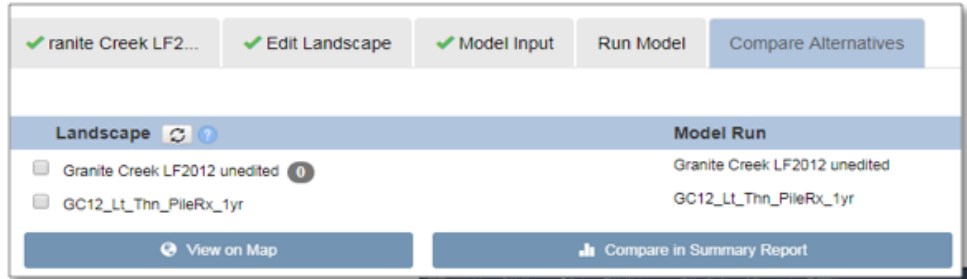
Take the User Survey

<https://goo.gl/forms/eWTJYxP7txldUKay2>



IFTDSS Has Unique Fuels Planning Functionality Found Nowhere else!

**Edit and Compare
Landscapes and
Fire Behavior Outputs in a
Single Workflow and
Generate Summary Reports**



USE IFTDSS FOR PRESCRIBED BURN PLANNING

Want to see where high flame lengths may cause RX planning problems?

VISUALIZE FIRE BEHAVIOR ON THE MAP!

Landscape Fire Behavior with FlamMap 5 in IFTDSS allows users to see all the same outputs you get from BEHAVE directly on the Map!

Perfect for use in burn plans and other planning documents. Need to write a contingency plan or a holding plan? Use the fire behavior function to view flame lengths, rate of spread and fireline intensity to show where problem areas could occur and where additional resources may be needed.

Upload your own local values and resource polygons and point data to further inform your plan!



For More Information

For more information about IFTDSS Development contact the IFTDSS Team.

Project Manager: Henry Bastian
Business Leads: Tim Sexton USFS, Kim Van Hemelryck DOI
IFTDSS Technical Leads: Caroline Noble, Kim Ernstrom, Bre Schueller, Nicole Vaillant